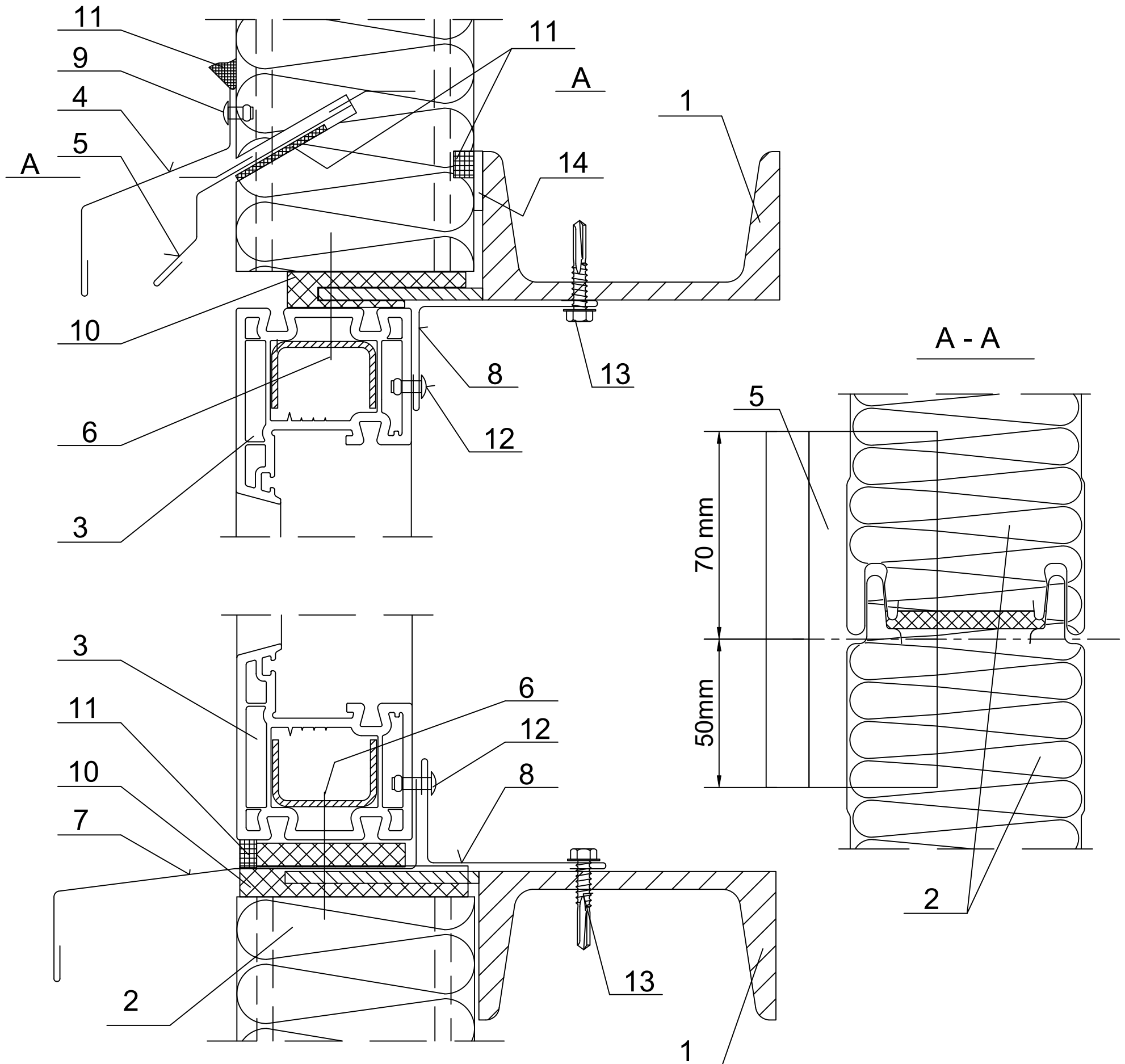


Date	Rev. date	Work nr.	Drw. nr.	Rev.
Drawn by Ruukki	Rev.	M27/S08	-	
Scale 1:3	Building		File nr. P2001/003-00039	



- |  |  |
|--|--|
| 1. Steel sheeting rail acc. to engineering design of the structure | 9. Watertight rivet                                    |
| 2. Ruukki SP2B PIR   | 10. Impregnated polyurethane sealant or expanding foam |
| 3. PCV window  | 11. Permanently elastic sealing compound               |
| 4. EA1B07 wall opening flashing                                    | 12. Steel rivet Al/Fe (every 300 mm)                   |
| 5. EA1B33 drip wall flashing                                       | 13. Tap screw for metal sheet                          |
| 6. Tap screw for fixing windows (every 500 mm).                    | 14. 4x20 PIR self-adhesive sealant                     |
| 7. Custom ordered flashing   |  |
| 8. Custom ordered flashing   |  |